

It's Mighty Dark to Travel

M: G; F: C or D, capo 5 or 7
 CD 1-Track 88, medley pt. 1

Bill Monroe

G

1. To me she was my lit - tle an - gel,
 Cho: It's might - y dark for me to trav - el,
 2. Travel - ing down this lone - some high - way,
 3. Many a night we strolled to - geth - er,

T
A
B

C G

- Sent down to me from God a - bove,
 - For my sweet heart she is gone,
 - Think - ing of my love who's gone,
 - Talk - ing of our love so fair,

8

- But on that day that I first met her,
 - The road is rough and filled with grav - el,
 - Know - ing soon we'll be to - geth - er,
 - My love for her will nev - er van - ish,

12 D G

- Then I told her of my love.
 - But I must jour - ney on and on.
 - She's the on - ly love I've known.
 - For I know I'll meet her there.

© 1951 (RENEWED) UNICHAPPELL MUSIC, INC. (BMI)
 ALL RIGHTS RESERVED. USED BY PERMISSION.

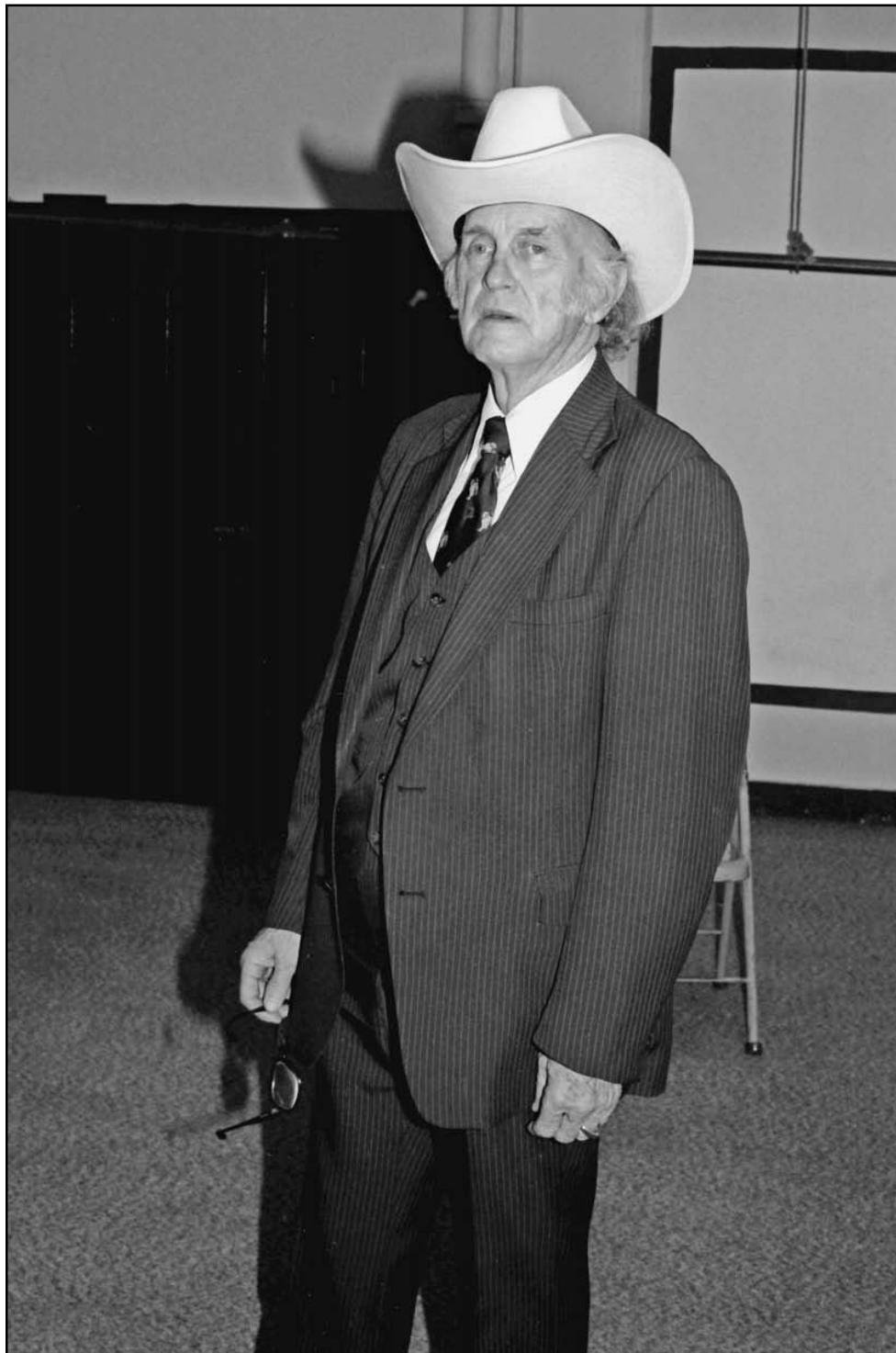


Photo by Dix Bruce

Bill Monroe, the Father of Bluegrass in 1980.